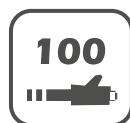


### HW-01C28-V

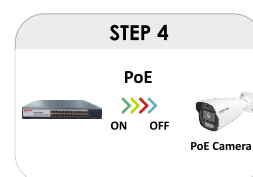
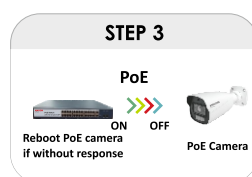
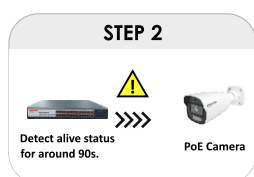


#### Main Feature:

- 24\*10/100/1000Mbps PoE ports, 2\*10/100/1000Mbps Uplink Port, 2\*1000M SFP slot
- Support IEEE802.3af/at, Support restrain network storm
- Support Max Transmission distance up to 100m with PoE Power
- All port supported by MDI/MDIX auto flip and self-negotiation
- Support Non-blocking the bandwidth each PoE port can
- Maximum power of single PoE port: 30 W;
- Maximum PoE power: 300W;
- Adopts store-and-forward architecture;
- Fanless, natural cooling, small, compact and quiet design,
- Suitable for desktop or wall Support lightning protection 4kV

#### WATCHDOG

Auto-detect and restart IP camera timely if the camera is halted.



HAMSA INDIA

Address: C-112, Sector-65, Gautam Buddha Nagar, Noida - 201301 (U.P.)

\*All picture and specifications are for reference only and are subject to change without prior notice.

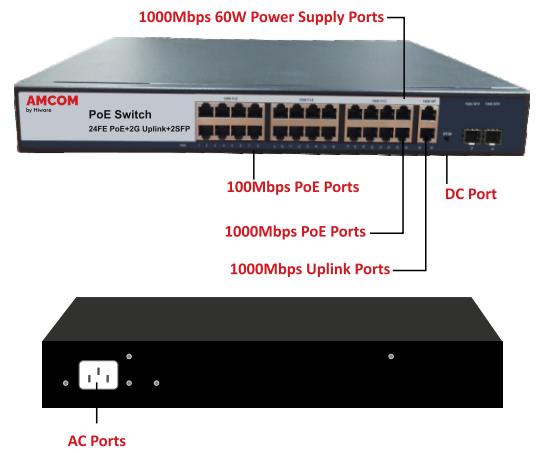
[www.amcomindia.com](http://www.amcomindia.com)

## Feature

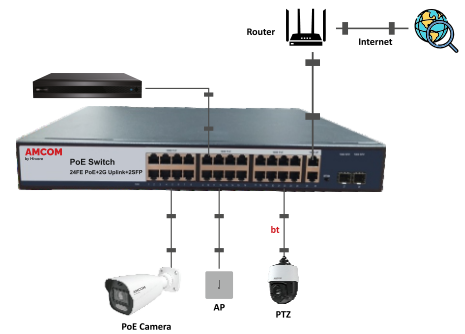
Power Adapter Voltage	AC 110V-240V
Consumption	300W(52V, 5.76A)
PoE Ethernet Port	1-24 port:10/100/1000Mbps
Ethernet Port, SFP Port	2*Uplink port: 1000Mbps, 2*SFP Port: 1000Mbps
Transmission Distance	100/1000Mbps:0-100m, Uplink Port:0-80m
Transmission Medium	Cat5/5e/6 standard network cable
Network Standard	IEEE802.3/802.3u, IEEE802.3x,IEEE802.ab
Switching Capacity	56Gbps
Packet Buffer Memory	4Mbits
Throughput	43.34Mbps
MAC Table	8K
Packet Forwarding rate	10Mbps:14880pps/port, 100Mbps:148800pps/port, 1000Mbps:1488000pps/port
PoE Standard	IEEE802.3af/at
PoE Power Supply	End-Span 1/2(+), 3/6(-) , 4/5(+), 7/8(-)
PoE Power	af=15.4w,at=30w for each port
Port Function	Power priority mechanism, fast and forward, MAC automatic learning and aging IEEE802.3X Full-duplex and mode and back pressure for Half-duplex mode
LED Indicator	LINK/ACT 100Mbps: PoE Status Indicator, Power Indicator, Extender
Working temperature	0°C~55°C
Relative Humidity	20-95%
Storage temperature	-20°C~70°C
Dimension(L*W*H)	440mm*192mm*45mm
Color & Weight	Black, 5.68Kg

## Specification

### Port Description



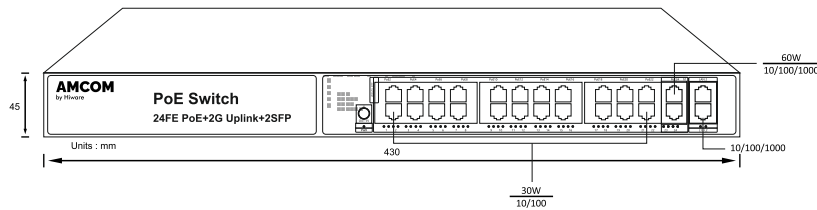
### Typical Applications



### AVAILABLE MODEL

Model No.	HW-D1C28-V
-----------	------------

### Structure Diagrams



HAMSA INDIA

Address: C-112, Sector-65, Gautam Buddha Nagar, Noida - 201301 (U.P.)

\*All picture and specifications are for reference only and are subject to change without prior notice.

www.amcomindia.com