

AMCOM

HW-LCK-B6

ELECTRIC RIM LOCK



5 PIN NICKEL BRASS
PLATED COMPUTERIZED
DOTTED KEYS



EASY INSTALLATION
FITS A WIDER
RANGE OF
DOORS



MECHANICAL
OVERRIDE CYLINDER



PUSH BUTTON
FOR EASY UNLOCKING

Main Feature:

- Double cylinders both inside and outside.
- Solid brass cylinders and latch bolt for enhanced security.
- Indoor push button for quick opening.
- Adjustable backset for more installation flexibility.
- Class matt black powder coating for elegant appearance.
- Brass computerized keys for users.

Product Specifications

- Normal Voltage: 12V DC
- Work Current: 1.5~3A
- Electronics Status: Requires power to open only
- Temperature Range: (-10)°C~(+50)°C
- Lock Body Dimension (in mm): 123*105*36.5

Note

When lubricating lock core, you can put the pencil into the cylinder, the amount of pencil lead powder can act as the lubricant. It's prohibited to inject various oils into the cylinder for lubrication.

HAMSA INDIA

Address: C-112, Sector-65, Gautam Buddha Nagar, Noida - 201301 (U.P.)

*All picture and specifications are for reference only and are subject to change without prior notice.

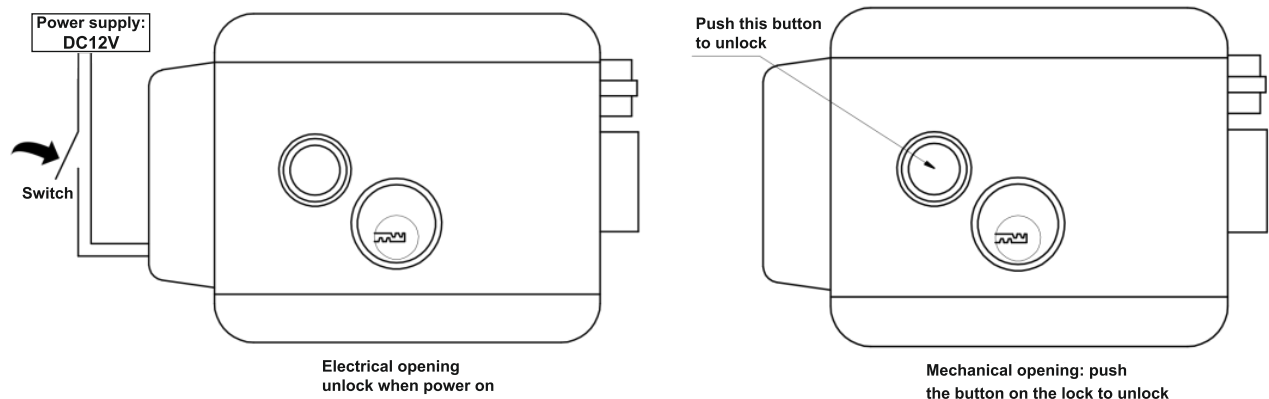
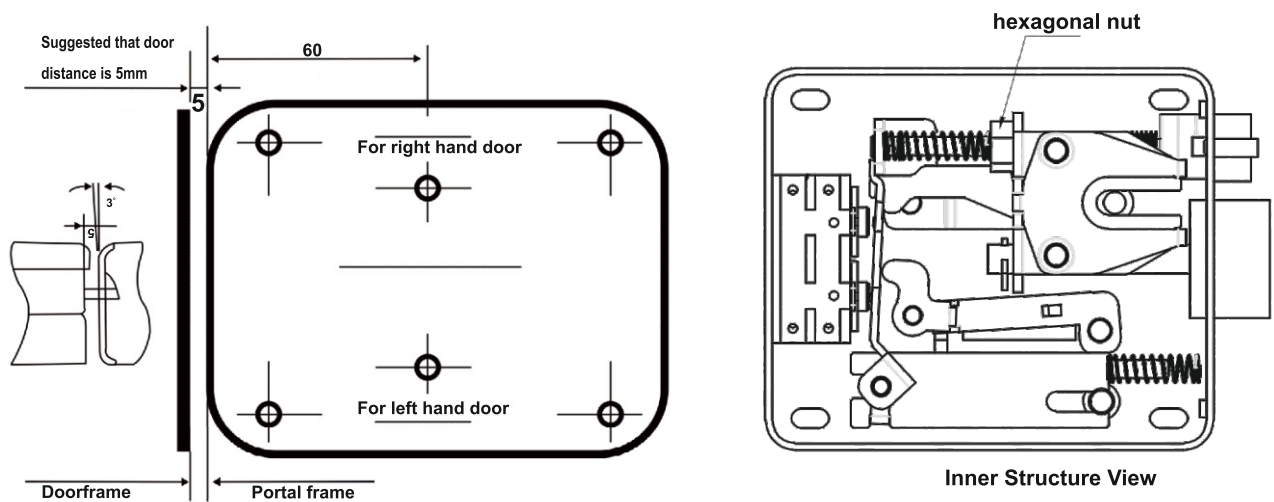
www.amcomindia.com

Contents Of The Electric Rim Lock

Before getting started on installation, make sure that all the parts are included.

A standard electric rim lock includes below contents:

- Lock body
- Small lock shell
- Outer cylinder (only for separated cylinder locks)
- Fixing plate (only for separated cylinder locks)
- Cylinder cover
- Keys
- Screws



HAMSA INDIA

Address: C-112, Sector-65, Gautam Buddha Nagar, Noida - 201301 (U.P.)

*All picture and specifications are for reference only and are subject to change without prior notice.

www.amcomindia.com